

# BLOUBERG LOCAL MUNICIPALITY



BLOUBERG MUNICIPALITY

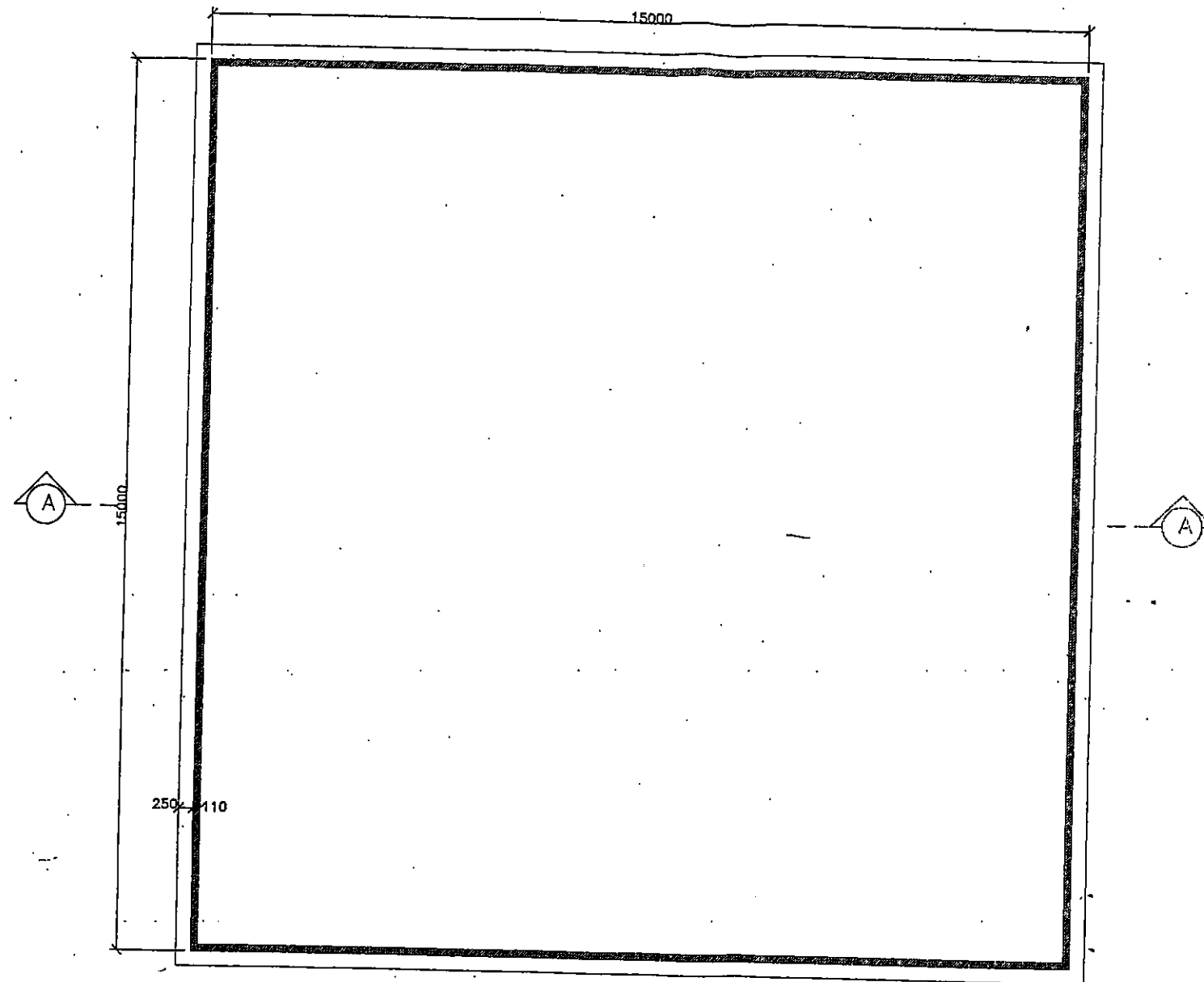
## TENDER DRAWINGS

VOLUME 2

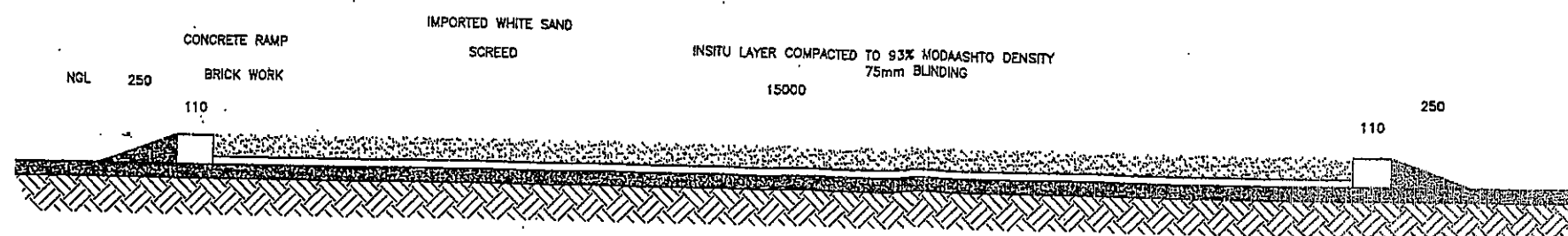
PREPARED FOR:  
BLOUBERG LOCAL MUNICIPALITY  
P.O. BOX 1593  
SENWABARWANA  
0790

TEL : (015) 505-7100  
FAX : (015) 505 0296

ISSUED FOR TENDER PURPOSE ONLY

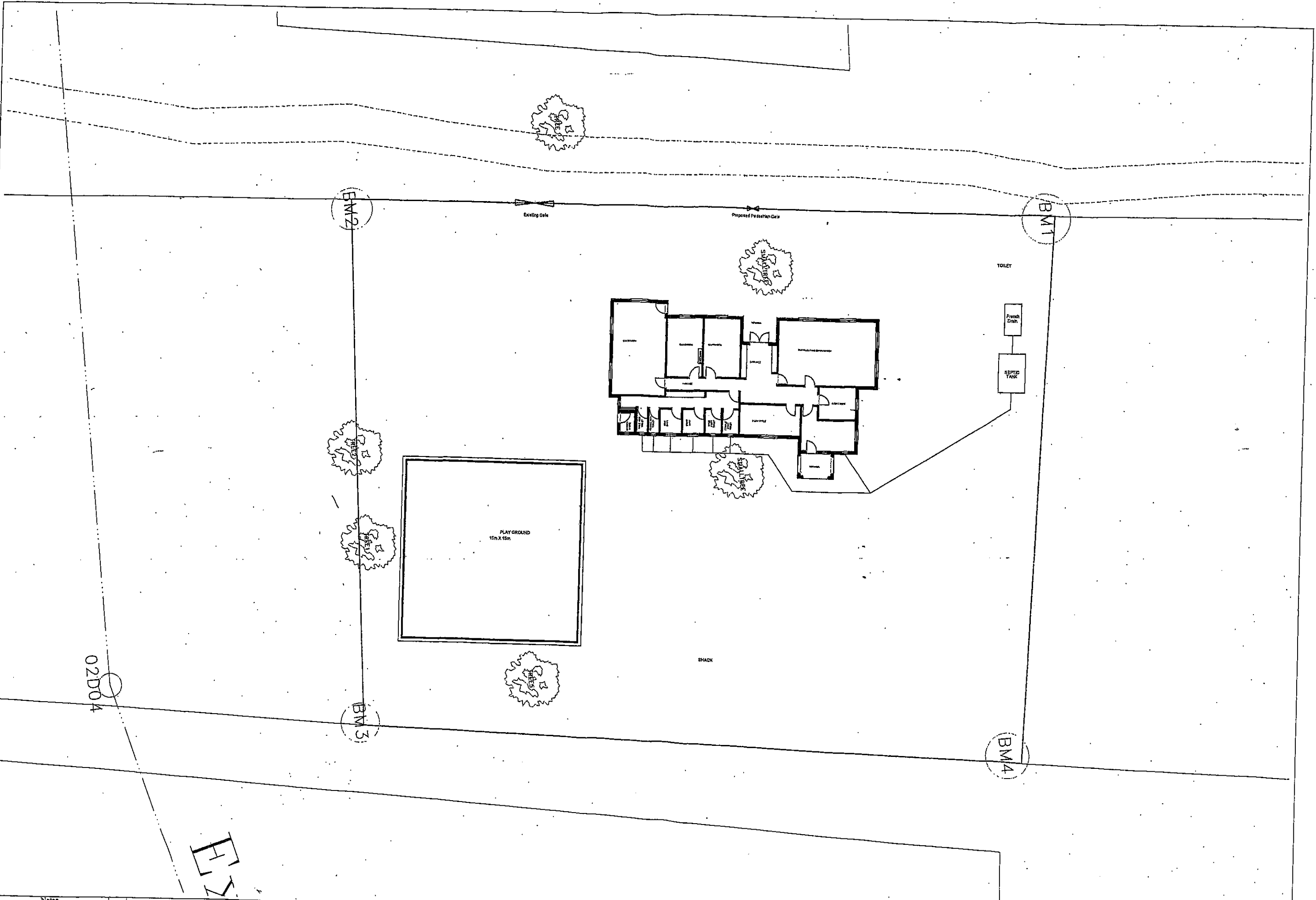


PLAN VIEW OF PLATFORM  
N.T.S



SECTION A-A  
N.T.S

Notes Issued for tender purpose Only		Designed by: E.R. Checked by: E.R. Drawn by: O.R. Checked by: E.R.		Blouberg Local Municipality P.O. 1593, SENWABARWANA, 0790 Tel: 015 505 7100 Fax: 015 505 0296	Drawing Title: PLAY GROUND PLAN AND SECTION Drawing No.: Project No.: Drawing Date: Drawing Scale:



02D04

ET

Notes	
07/2013	Issued for tender purpose Only



Designed by:	E.R
Checked by:	E.R
Drawn by:	O.R
Checked by:	E. R



Blouberg Local Municipality  
P.O. 1593, SENWABARWANA, 0790  
Tel: 015 505 7100  
Fax: 015 505 0296

Drawing Title

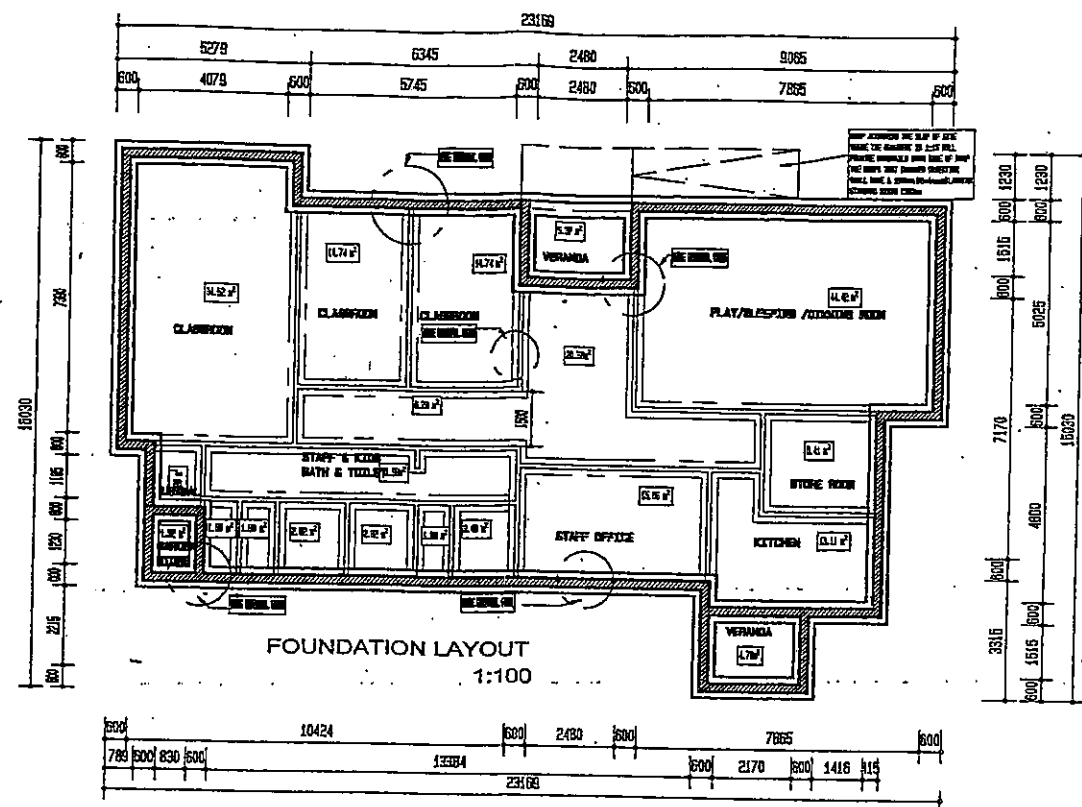
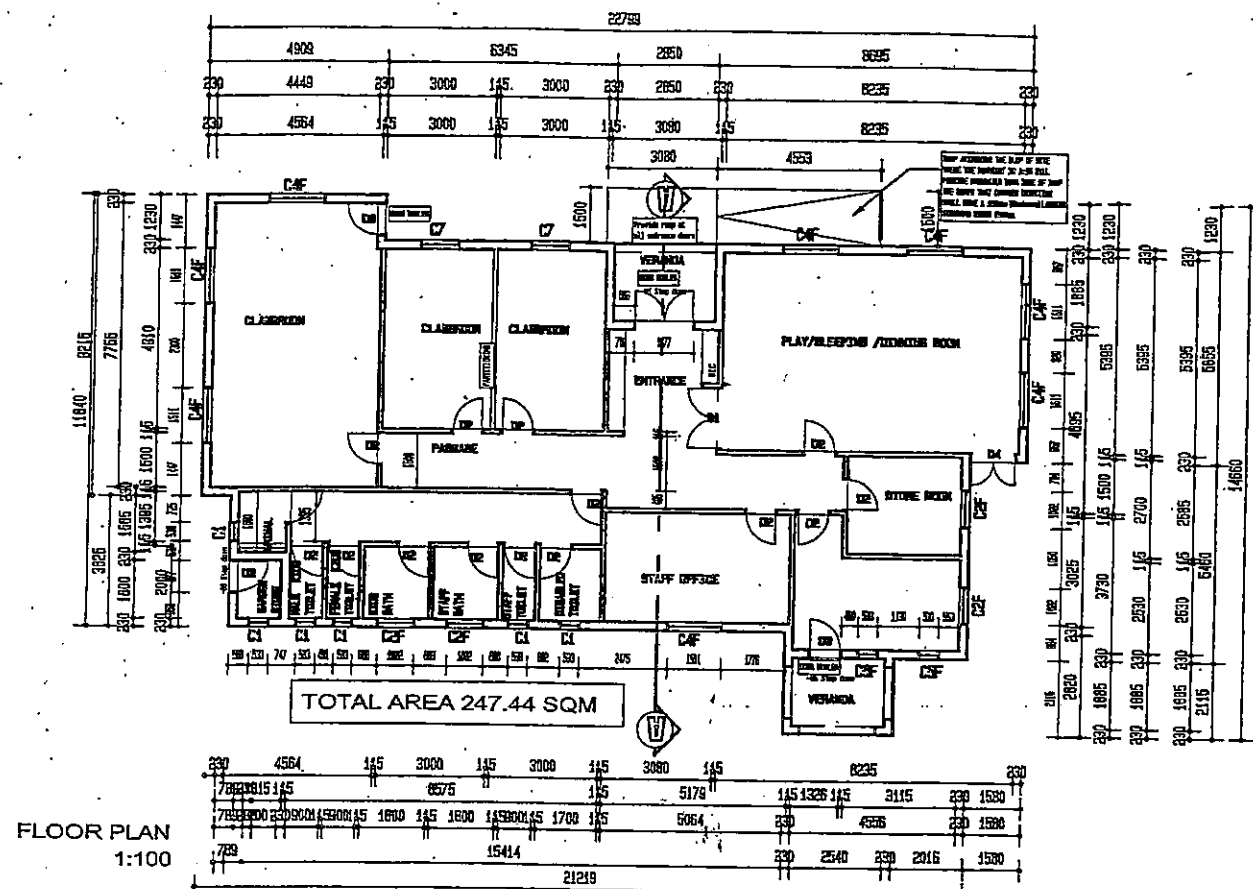
MAIN LAYOU PLAN

Project No.

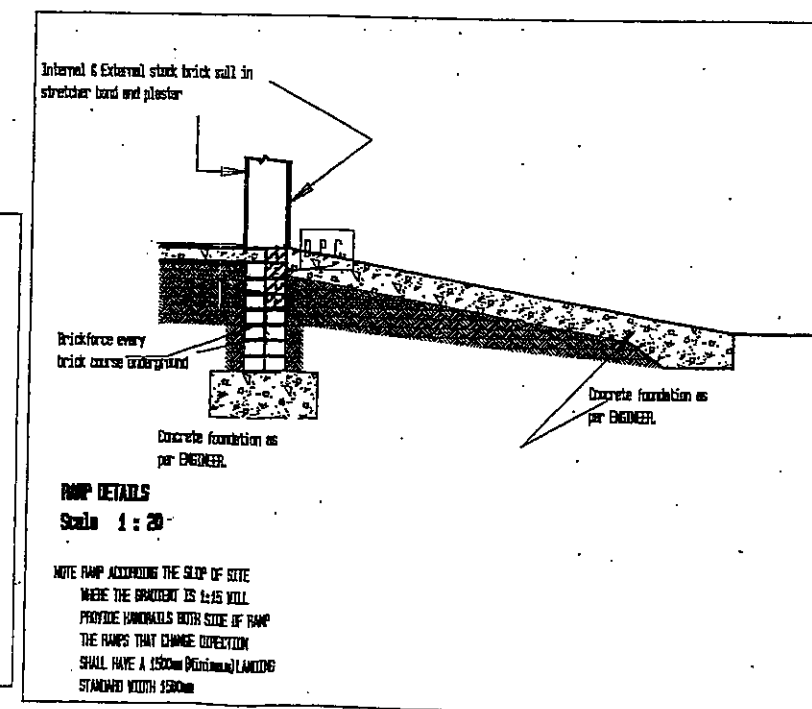
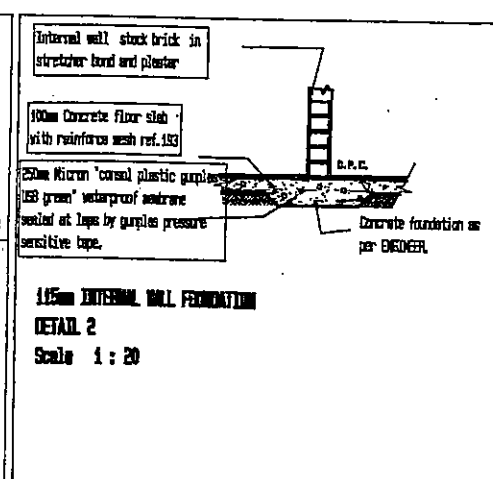
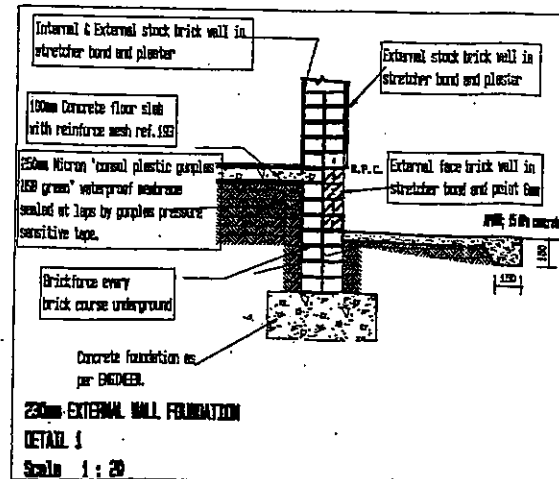
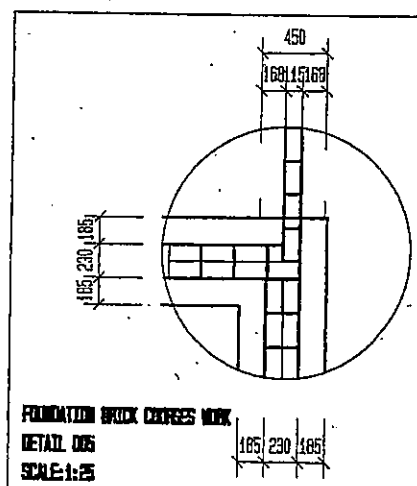
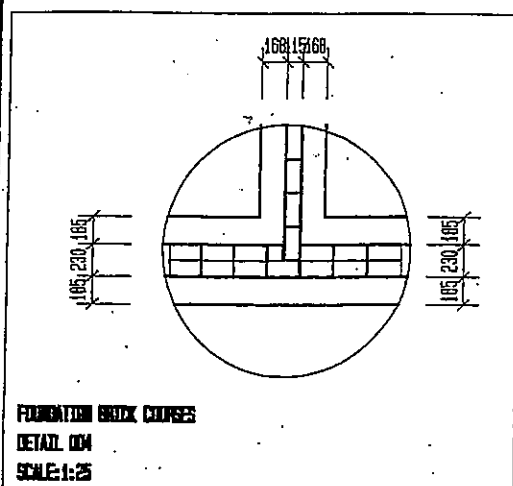
Drawing No.

Rev. No.

00



AREA SCHEDULE		
BUILDING	AREA	
GROUND FLOOR	247.44 M <sup>2</sup>	
TOTAL BUILDING	247.44 M <sup>2</sup>	
COVERAGE AREA		
TOTAL BUILDING	247.44 M <sup>2</sup>	
TOTAL SITE	2500 M <sup>2</sup>	9.9%



DATE	DESCRIPTION	REVISION
06/2013	ISSUE FOR INFORMATION	
07/2013	ISSUE FOR TENDER	

DESIGNED BY:	E.R.
CHECKED BY:	E.R.
DRAWN BY:	T.T.
CHECKED BY:	E.R.



BLOUBERG LOCAL MUNICIPALITY  
P.O. BOX 1593, SENWABARWANA 0790  
TEL: 015 505 7100, FAX: 015 510 1726

DRAWING TITLE

FLOOR, FOUNDATION AND DETAIL PLAN

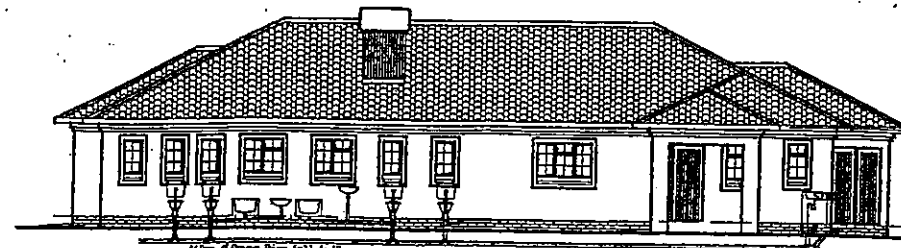
PROJECT NO

BM07/2013/14

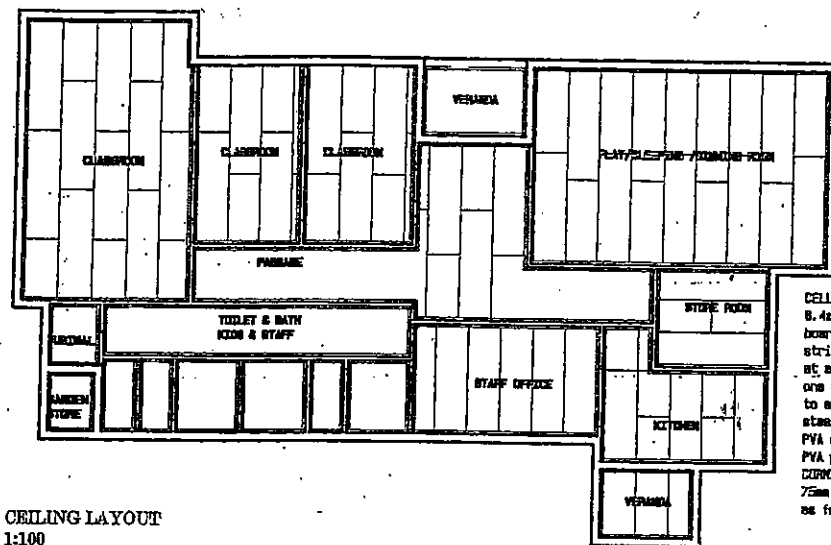
DRAWING NO

00

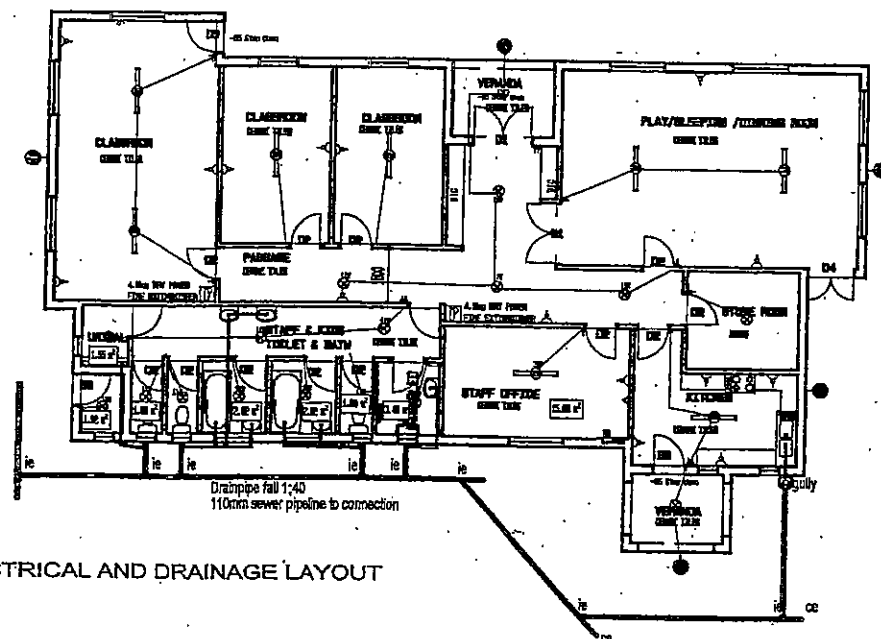




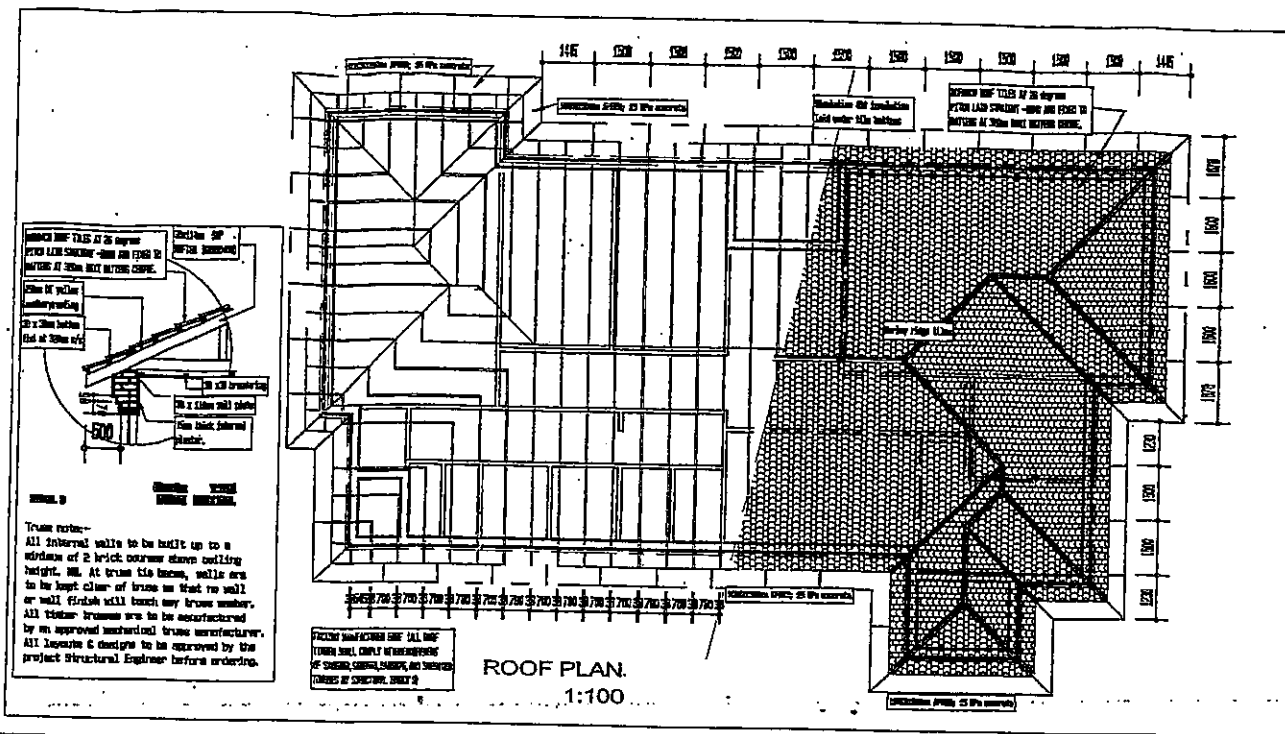
BACK ELEVATION  
1:100



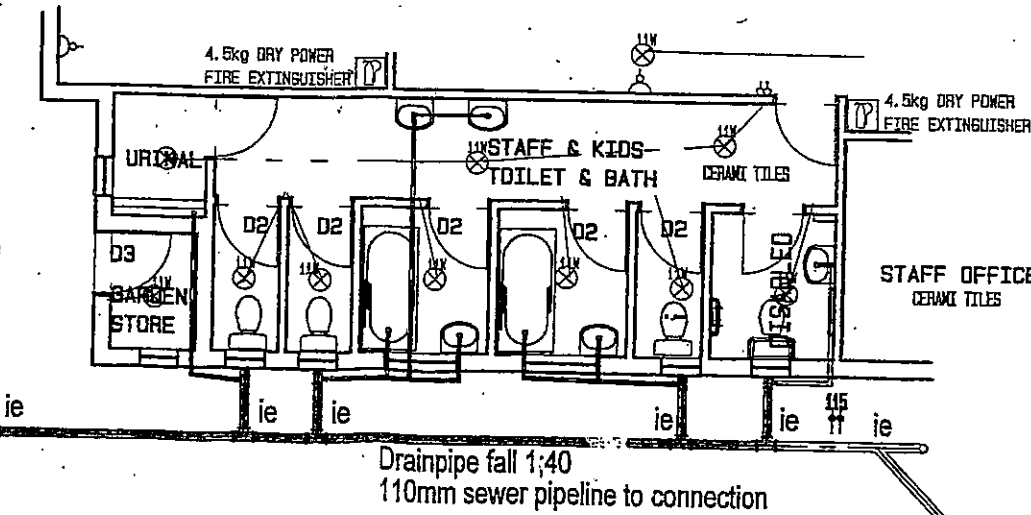
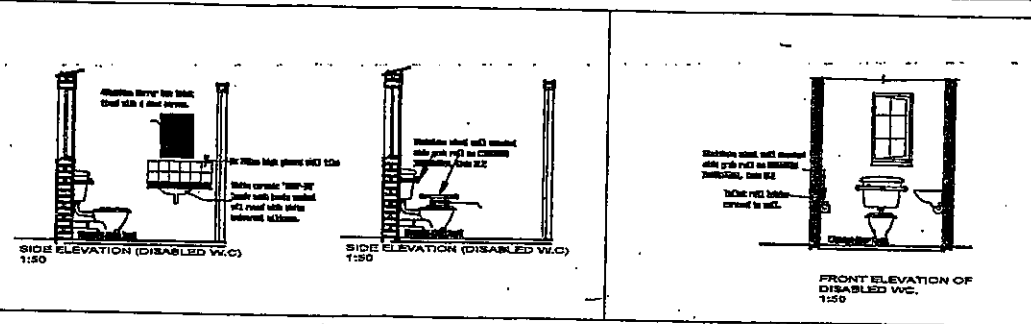
CEILING LAYOUT  
1:100



ELECTRICAL AND DRAINAGE LAYOUT  
1:100



ROOF PLAN  
1:100



DRAINAGE LAYOUT DETAIL  
1:50

## CONSTRUCTION NOTES

### Foundations:

STRIP FOUNDATIONS - 600x250mm 20Mpa CONCRETE STRIP FOUNDATION TOP OF FOUNDATION TO BE MIN 300mm BELOW N.L.L. FILLING - APPROVED HANDSOME FILLING COMPACTED IN LAYERS OF MAX. 500mm FILLING TO BE TREATED WITH SABS APPROVED INSECTICIDE AND NEED KILLER TO COMPLY WITH SABS 1164 & 1165

### Surfacing & floors:

SURFACED 100mm THICK CONCRETE SLAB ON USB GREEN 250 MEXCON DAMP PROOF MEMBRANE. SURFACED CAST IN SECTIONS OF MAX. APRON - 1000mm WIDE 18Mpa CONCRETE APRON WITH WOOD FLOAT FINISH, APRON TO BE CAST IN LENGTHS OF MAX. 1500mm & TO HAVE A 1:100 FALL AWAY FROM BUILDING. SKIRTINGS - 70mm HIGH SKIRTINGS. SCREWED AND PLUGGED TO WALL AT 450mm C/C.

### Walls & Structure:

INTERNAL & EXTERNAL WALLS - APPROVED STOCKBRICK WALLS IN STRETCHER BOND BRICKWORK: BPC BRICKWORK TO 230 AND 115 WALLS FOUNDATION WALLS - EVERY 2ND COURSE, SUPERSTRUCTURE EVERY 4TH COURSE, OVER OPENINGS FORMED IN BRICKWORK EVERY COURSE FOR 3 COURSES EXTENDING 500mm BEYOND OPENING IN BOTH DIRECTIONS.

LINTOL - APPROVED OVER ALL WINDOW & DOOR OPENINGS. D.P.C - PROVIDE 375 MEXCON DPC IN WALLS AT FLOOR LEVEL & UNDER ALL EXTERNAL WINDOW CILLS. EXTERNAL WALLS -

D.P.C - PROVIDE 375 MEXCON DPC IN WALLS AT FLOOR LEVEL & UNDER ALL EXTERNAL WINDOW CILLS.

INTERNAL & EXTERNAL WALLS - APPROVED STOCKBRICK WALLS IN STRETCHER BOND TO RECEIVE 1 x COAT. SMOOTH 1:5 CEMENT SAND PLASTER TO RECEIVE 100% UNIVERSAL UNDERCOAT AND TWO COATS PLASTER POLYVIN SUPER ACRYLIC PVA. COLOR AS PER ARCHITECT.

### Window Sills:

INTERNAL WINDOW CILL - 15mm THICK FIBRE CEMENT WINDOW SILL. BEDDED IN 1:4 CEMENT SAND MORTAR. SAND & APPLY ALKALI RESISTANT SEALER AND TWO COATS MAT ENAMEL PAINT.

RICKFORCE: BPC BRICKWORK TO 230 AND 115 WALLS FOUNDATION WALLS - EVERY 2ND COURSE, SUPERSTRUCTURE - EVERY 4TH COURSE, OVER OPENINGS FORMED IN BRICKWORK, EVERY COURSE FOR 3 COURSES EXTENDING 500mm BEYOND OPENING IN BOTH DIRECTIONS.

## SECTION DESCRIPTION

Monarch roof concrete roof tiles laid in straight bond with minimum 100mm headlap, fixed at a pitch of 26 with each tile fixed using non-corrosive nails to 38 x 38mm softwood battens at maximum 220mm centres with trusses (elsewhere specified) at 700mm centres.

## DRAINAGE NOTES

- ALL DRAINAGE TO BE DONE BY A REGISTERED PLUMBER AND IN ACCORDANCE WITH THE BUILDING REGULATIONS AND LOCAL AUTHORITIES.
- ALL WASTE WATER PIPES TO BE 50mm Ø PVC
- ALL SOIL WATER PIPES TO BE 100mm Ø PVC
- ALL MAIN SEWER PIPES TO BE 100mm Ø PVC
- ALL CORNERS, BENDS & CONNECTIONS MUST BE PROVIDED WITH INSPECTION EYES.
- CLEANING EYES MUST BE PROVIDED AT THE START OF EACH PIPE AND AT EACH 25m MAXIMUM INTERVALS AND ALL FALL PIPES.
- TWO WAY VENTILATES ON THE OUTSIDE ON ALL SOIL WATER PIPES
- ANTI-VAC TRAPS ON ALL WASTE WATER FURNITURE FURTHER AWAY THAN 3m FROM GULLY.
- ALL CLEANING EYES CLOSED WITH 200x250mm CAST-IRON COVER COMPLETE WITH FRAME AND CONCRETE HOUSING BY APPROVED MANUFACTURER AND IT MUST BE MARKED.
- PVC GULLY WITH STANDARD CONC. HOUSING AND PVC GRID GRID AS SUPPLIED BY HARLEY D.O.A.
- SUPPLY ALL FURNITURE WITH TRAP FOR 50mm AND 100mm PVC PIPES TO SATISFY STANDARDS OF LOCAL AUTHORITIES.
- ALL ACCESS EYES AND INSPECTION EYES MUST BE ACCESSIBLE
- "ANTI-VACUUM TRAPS" ON ALL WCs.

## ELECTRICAL LEGEND

	10 AMPERE SWITCH
	15 AMPERE SWITCH
	20 AMPERE SWITCH
	25 AMPERE SWITCH
	30 AMPERE SWITCH
	35 AMPERE SWITCH
	40 AMPERE SWITCH
	45 AMPERE SWITCH
	50 AMPERE SWITCH
	60 AMPERE SWITCH
	70 AMPERE SWITCH
	80 AMPERE SWITCH
	90 AMPERE SWITCH
	100 AMPERE SWITCH
	110 AMPERE SWITCH
	120 AMPERE SWITCH
	130 AMPERE SWITCH
	140 AMPERE SWITCH
	150 AMPERE SWITCH
	160 AMPERE SWITCH
	170 AMPERE SWITCH
	180 AMPERE SWITCH
	190 AMPERE SWITCH
	200 AMPERE SWITCH

DATE	DESCRIPTION	REVISION
01/2013	ISSUE FOR INFORMATION	
07/2013	ISSUE FOR TENDER	

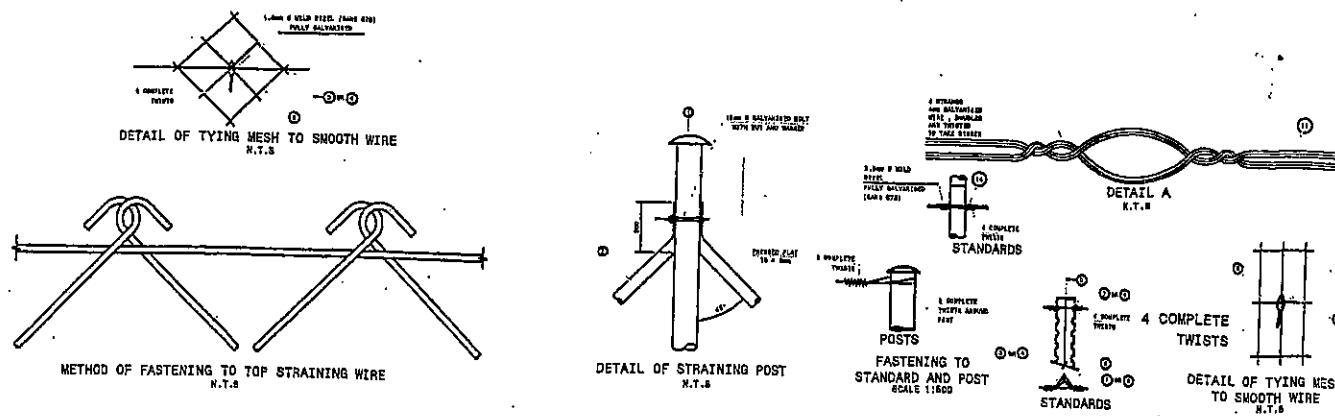
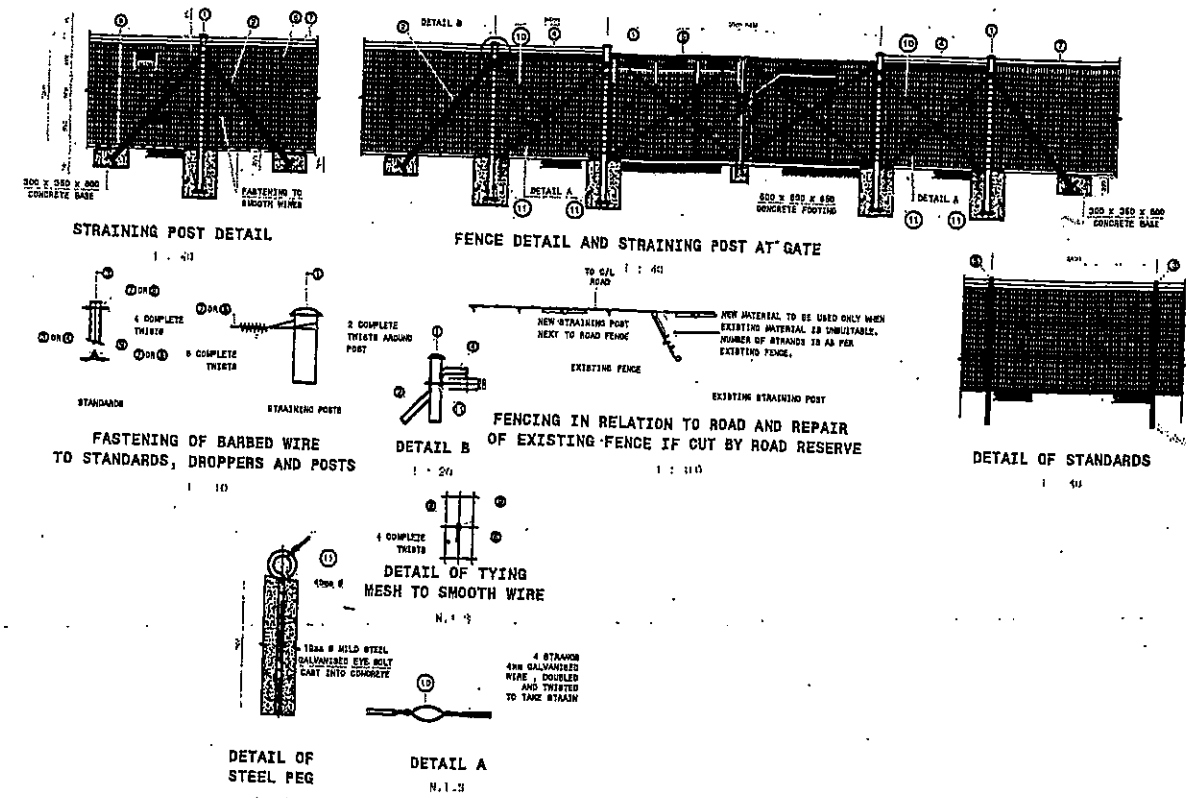
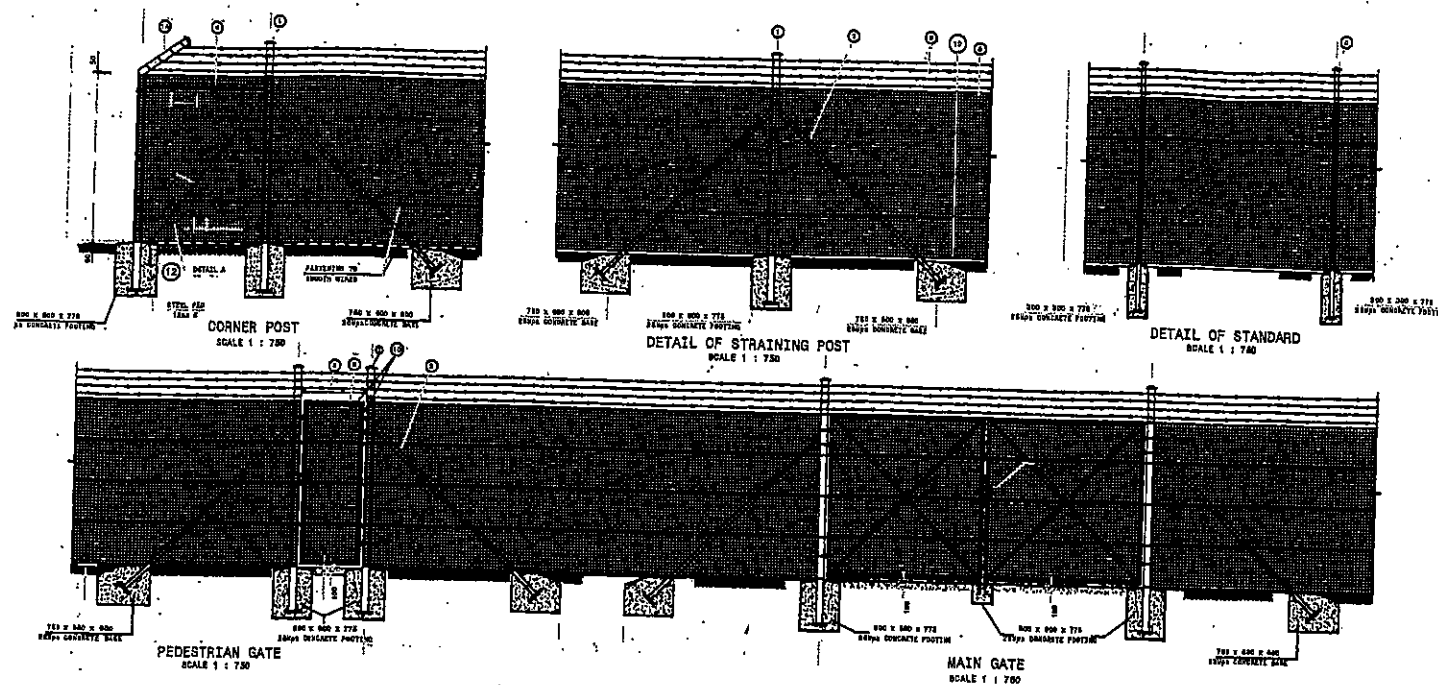
DESIGNED BY:	E.R.
CHECKED BY:	E.R.
DRAWN BY:	T.T.
CHECKED BY:	E.R.

BLOUBERG LOCAL MUNICIPALITY  
P.O. BOX 1593, SENWABARWANA 0790  
TEL: 015 505 7100, FAX: 015 510 1725





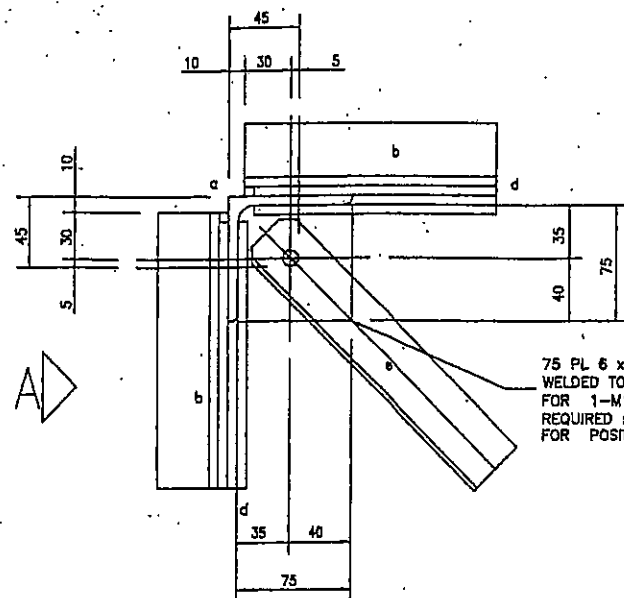
DRAINAGE AND ELECTRICAL, ROOF AND CEILING PLAN

PROJECT NO. 00

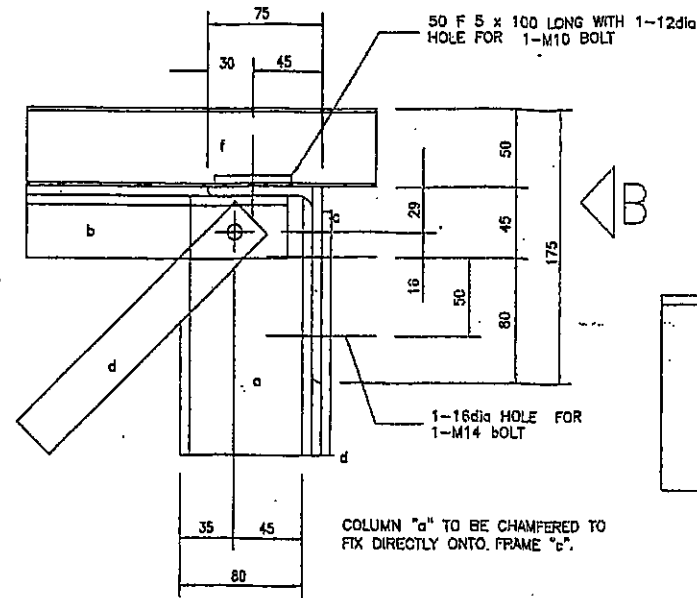


- NOTES :**
1. POWER :
  2. WIRE :
  3. STANDARDS :
  4. GATE :
  5. GATE POSTS :
  6. GATE POSTS :
  7. GATE POSTS :
  8. GATE POSTS :
  9. GATE POSTS :
  10. GATE POSTS :
  11. GATE POSTS :
  12. GATE POSTS :
  13. GATE POSTS :
  14. GATE POSTS :
  15. GATE POSTS :
  16. GATE POSTS :
  17. GATE POSTS :
  18. GATE POSTS :
  19. GATE POSTS :
  20. GATE POSTS :

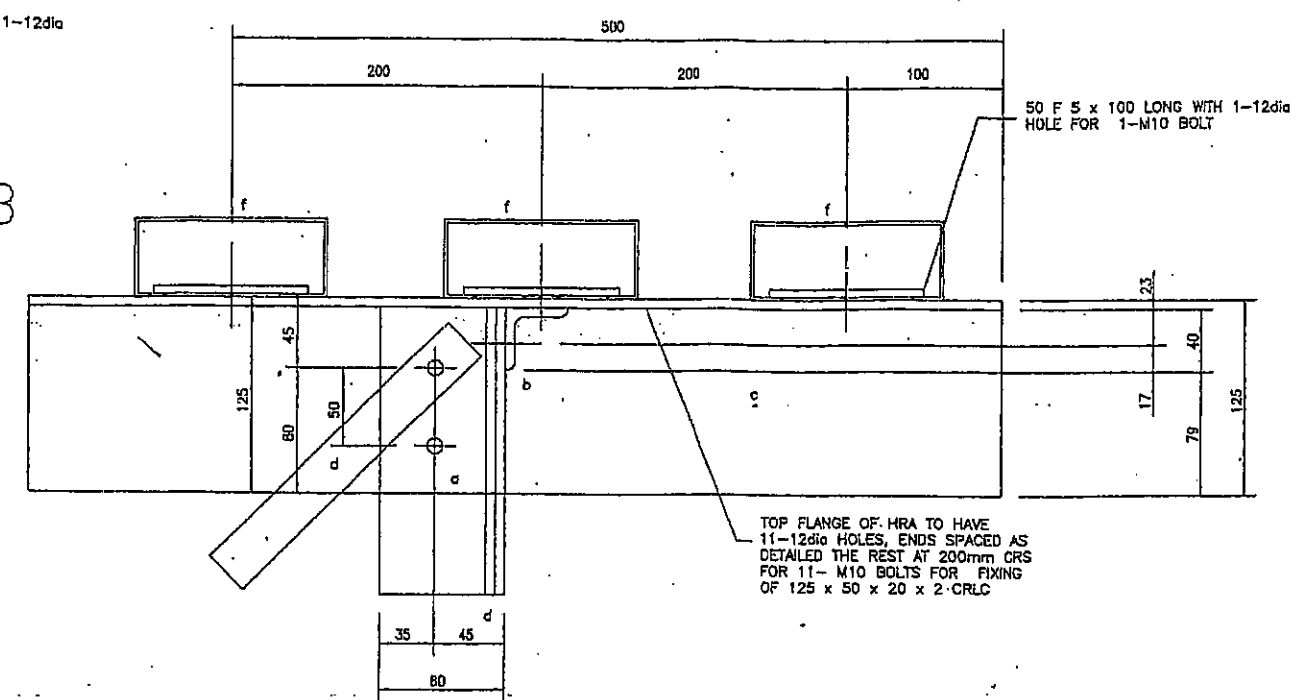
Notes		Designed by:		E.R		 <div>Blouberg Local Municipality P.O. 1593, SENWABARWANA, 0790 Tel: 015 505 7100 Fax: 015 505 0296</div>	Project Title		Project No.	
07/2013	Issued for tender purpose Only	Checked by:		E.R			Drawing Title	Drawing No.		Rev. No. 00
		Drawn by:		O.R						
		Checked by:		E. R						
 <div>EXPANDED PUBLIC WORKS PROGRAMME Creating opportunities towards a better future</div>						WIREMESH STEEL FENCE DETAILS				



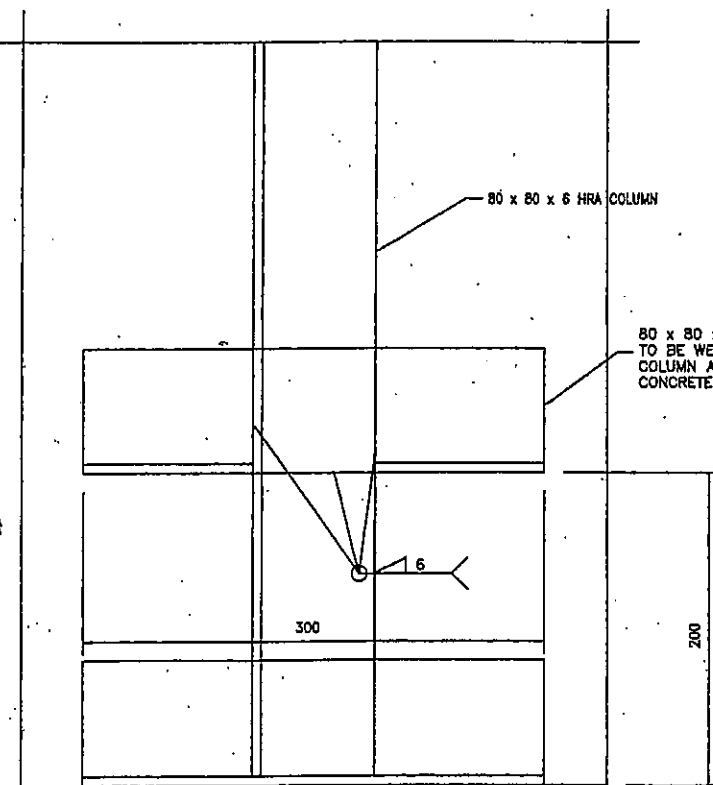
DETAIL 2  
1:2500



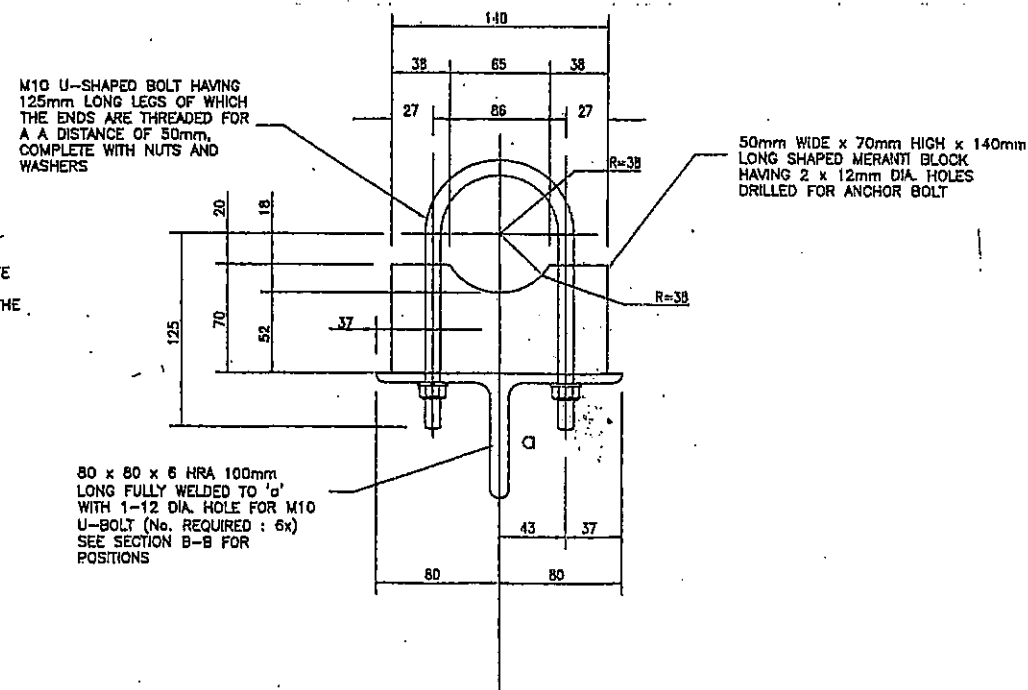
DETAIL 3  
1:2500



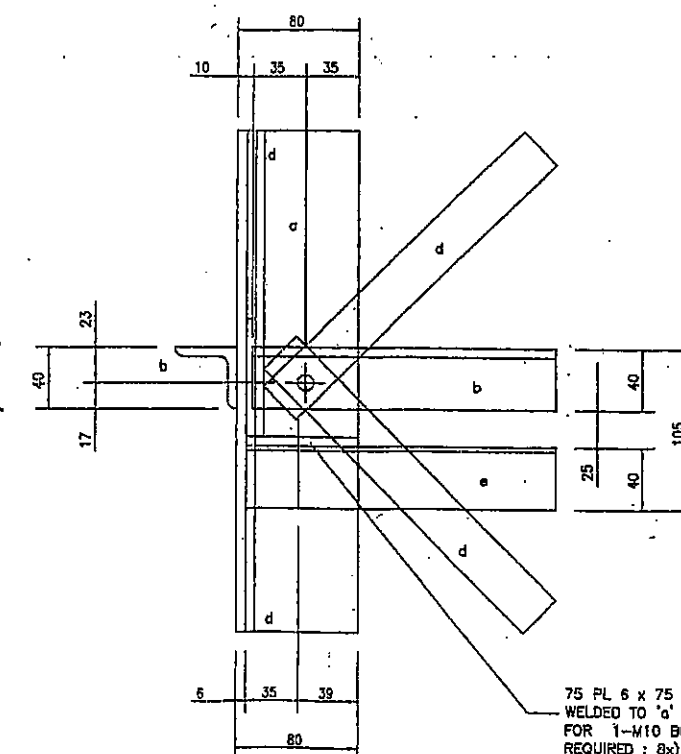
VIEW B  
1:2500



BASE PLATE DETAIL 1  
1:2500 (4 OFF REQUIRED)



PIPE CLAMP DETAIL  
1:2500 (6 OFF REQUIRED)



VIEW A  
1:2500

50mm ON ORIGINAL SCALE

Notes	
07/2013	Issued for tender purpose Only



Designed by:	E.R.
Checked by:	E.R.
Drawn by:	O.R.
Checked by:	E.R.



Blouberg Local Municipality  
P.O. 1593, SENWABARWANA, 0790  
Tel: 015 505 7100...  
Fax: 015 505 0296

Project Title	Project No.
Drawing Title	Drawing No.
ELEVATED STEEL STAND DETAILS	
	Rev. No.
	.00





